

Chorus: On the recording, "Drives real fast and she drives real hard" is somebody's overdub, EQ'd very bassy. Live, you can sing that part by briefly using a "bass-proximity effect", cup the mic and sing very close.

♩ = 146

Lead

# The Little Old Lady From Pasadena

As performed by  
JAN AND DEAN

## Refrain 1

Musical notation for Refrain 1, featuring a treble clef, key signature of two flats, and 4/4 time signature. The melody consists of a series of rests followed by a short melodic phrase. Chords G<sup>b</sup> and B<sup>b</sup> are indicated above the staff. A section labeled "DRUMS" is indicated by a dashed line. The lyrics "The" are written below the staff.

## Verse 1

Musical notation for Verse 1, featuring a treble clef, key signature of two flats, and 4/4 time signature. The melody is written on a staff with lyrics underneath. Chords E<sup>b</sup>, A<sup>b</sup>, E<sup>b</sup>, E<sup>b</sup>, B<sup>b</sup>, F, B<sup>b</sup>, E<sup>b</sup>, E<sup>b6</sup>, A<sup>b</sup>, Fm, D<sup>b</sup>, and B<sup>b</sup> are indicated above the staff. The lyrics are: "Lit-tle old la-dy from Pas-a - de - na has a pret-ty lit - tle flow-er bed of white gar - den - ias. But parked in her rick-et-ty old gar-age is a brand new, shi-ny red, sup-er-stock Dodge. And".

## Chorus 1

Musical notation for Chorus 1, featuring a treble clef, key signature of two flats, and 4/4 time signature. The melody is written on a staff with lyrics underneath. Chords E<sup>b</sup>, A<sup>b</sup>, and E<sup>b</sup> are indicated above the staff. The lyrics are: "ev'ry-bo-dy's say-in' that there's no-bo-dy mean-er than the lit-tle old la-dy from Pas-a - de - na. drives real fast and she drives real hard. She's the ter-ror of Co-lo-ra-do Bou-le - vard."

## Refrain 2

Musical notation for Refrain 2, featuring a treble clef, key signature of two flats, and 4/4 time signature. The melody consists of a series of rests followed by a short melodic phrase. Chords G<sup>b</sup> and B<sup>b</sup> are indicated above the staff. A section labeled "DRUMS" is indicated by a dashed line. The lyrics "If you" are written below the staff.

## Verse 2

Musical notation for Verse 2, featuring a treble clef, key signature of two flats, and 4/4 time signature. The melody is written on a staff with lyrics underneath. Chords E<sup>b</sup>, A<sup>b</sup>, E<sup>b</sup>, E<sup>b</sup>, B<sup>b</sup>, F, and B<sup>b</sup> are indicated above the staff. The lyrics are: "see her on the street, don't try to choose her. You might drive a go - er but you'll nev-er lose her. Well, she's".



gon-na get a tick-et now, soon-er or lat - er, 'cause she can't keep her foot off the ac - cel-er - at - or. And

### Chorus 2



ev'ry-bo-dy's say-in' that there's no-bo-dy mean-er than the lit-tle old la-dy from Pas-a - de - na.

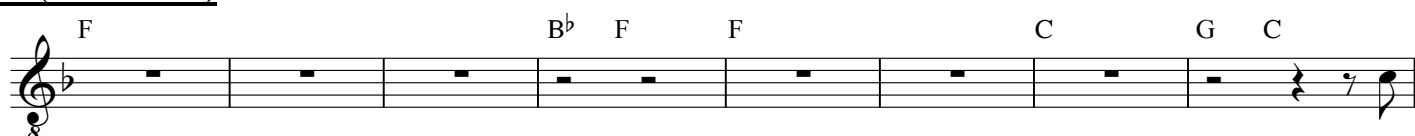


drives real fast and she drives real hard. She's the ter-ror of Co-lo-ra-do Bou-le - vard.

### Refrain 3



### Solo (like Verse)



The



guys come to race her from miles a-round, but she'll give 'em a length, and she'll shut 'em down. And

### Chorus 3

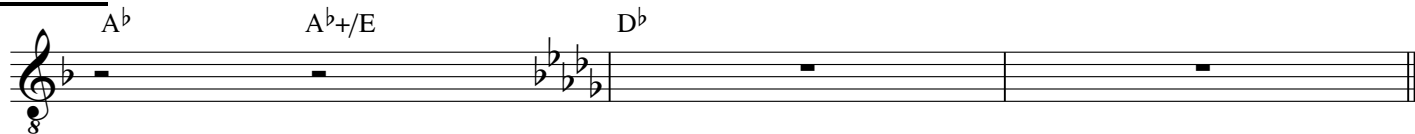


ev'ry-bo-dy's say-in' that there's no-bo-dy mean-er than the lit-tle old la-dy from Pas-a - de - na.



drives real fast and she drives real hard. She's the ter-ror of Co-lo-ra-do Bou-le - vard.

### Refrain 4



### Vamps Out



1. (Tacet) Entrance > Come on, Gran - ny go, Ba - by come on, Gran - ny  
All repeats: Go, Come on, Gran - ny go, } come on, Gran - ny